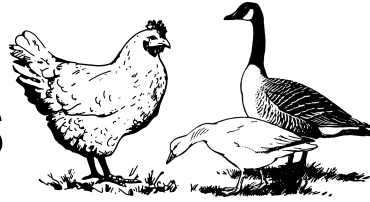


EVENTS & FAIRS CHECKLIST: POULTRY



OFFICIAL CERTIFICATE OF VETERINARY INSPECTION (CVI)

- Is a current 2026 NPIP 9-3 form. NPIP 9-3 forms are only available to NPIP participants. All exhibition birds must be part of the NPIP program, which means they have had annual testing as a flock.

RECOMMENDED VACCINES

- Merek's Disease vaccine

ANIMAL CONDITION

- Body condition score should be within the healthy range.
- Ideal BCS range is 3-4 of 5.

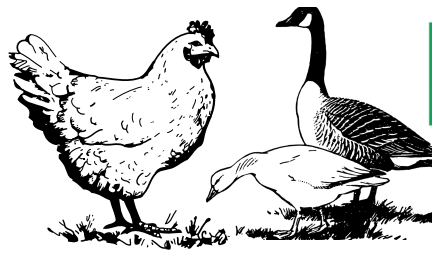
SIGNS OF POOR POULTRY HEALTH

- Must show no evidence of disease: diarrhea, runny nares, watery eyes, snicker, etc.
- No feather loss, including "healing" lesions, lice, or mites.
- No scabs, crusts, pimples, blisters, open skin, open wounds/abscesses.
- No eye abscesses, eye injuries or blindness
- No prolapsed vents
- No signs of neurological impairment
- No signs of lameness or pain (hunched posture/dull/head pressing).

ANIMAL IDENTIFICATION

- No ID is required other than proof of NPIP status in the form of a current NPIP 9-3 form.

SIGNS OF DISEASE REFERENCE



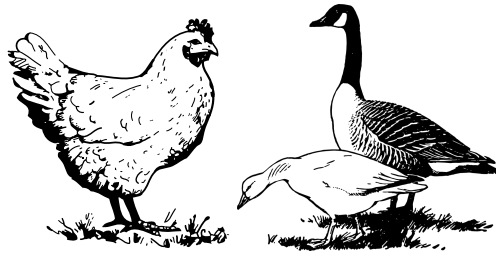
BASIC BODY CONDITION SCORING- POULTRY

Poultry Body Condition Score

Maine Animal Health Program



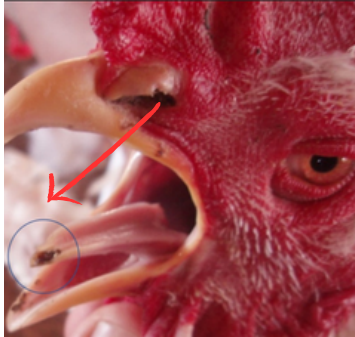
	1 EMACIATED	Keel is prominent with a concave appearance on either side. Muscle cover is minimal with trace fat cover.
	2 UNDERCONDITIONED	Keel is evident with a concave appearance on either side. Muscle cover is detectable with little fat cover.
	3 WELL CONDITIONED	Keel has trace prominences with smooth transition side to side with slightly convex appearance due to adequate muscling and fat cover.
	4 OVERCONDITIONED	Keel has no prominences with smooth transition side to side with convex appearance due to adequate muscling and ample fat cover.
	5 OBESE	Keel has no prominences sitting recessed within the layers of muscling and excess fat cover.



SHALL NOT PASS CHECK-IN FINDINGS



Scan the QR code
for more
information on
zoonotic poultry
diseases



Oral Lesions can be caused by a number of injuries, bacteria and viruses. At an event, there is no way to tell for certain the cause, which is why DACF doesn't recommend exhibition of animals with oral lesions at public events. Alert the fair veterinarian of this finding. Animals with oral lesions should not be allowed off the transport, and the animal should go home immediately.

***Reportable diseases with possible oral lesions: Fowl pox**

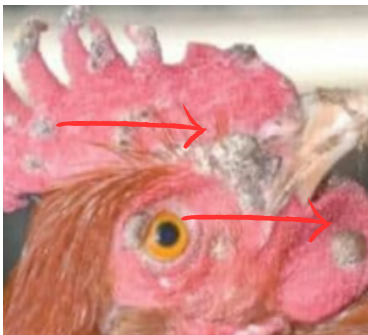
Possible Zoonotic or Infectious Causes: Mixed Bacterial/Fungus/Yeast



Respiratory signs can be a serious illness. Rapid breathing, open beak breathing, snickering, wheezing, foam around the eyes or beak, watery eyes, and abnormal neck/head posture are all respiratory illness signs. A veterinarian should be consulted if these symptoms are observed to determine if the cause is stress-related or due to illness. DACF recommends that ill or severely stressed poultry be sent home. ***Please note discharge can be a source of infection.**

Possible Zoonotic or Infectious Causes: Influenza, Coronaviruses, Mycoplasma, "Shipping Fever" Disease Complex

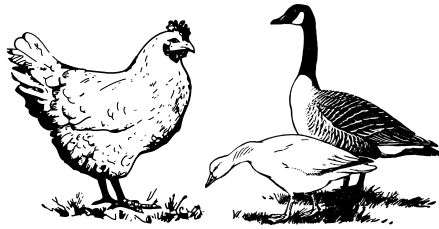
Sudden deaths of 2 or more exhibition birds in 24 hours must be reported to the fair veterinarian.



Crusts and feather loss not caused by behaviors such as bullying have a range of possible causes, such as external parasites, viruses, bacteria, or even fungus. Lice and mites are considered infectious diseases and can be visualized with a microscope or by eye in most cases. Fowl Pox is highly contagious and causes lesions that can look similar to pecking lesions or skin infections. DACF recommends these birds be sent home if there is evidence of disease.

***Please note that crusts and fallen feathers can be a source of infection**

Possible Zoonotic or Infectious Causes: Poultry lice, Fowl Pox, Feather mites



SHALL NOT PASS CHECK-IN FINDINGS



Open wounds are not advisable for public exhibition for the concerns of animal welfare and public perception. Lesions should be promptly treated appropriately and covered with a bandage whenever possible. Oozing discharge from wounds may contain infectious bacteria and viruses.

***Please note discharges can be sources of infection**

Possible Zoonotic or Infectious Causes: MRSA, E. coli, Salmonella



Eye lesions may be a symptom of concern for public and animal health.

Trauma lesions and ulcerative diseases of the eye can look similar; advanced diagnostics are needed to make a diagnosis. Injuries and diseases of the eye can impair the animal's vision and can cause the animal to become less predictable to handle. DACF recommends these animals be sent home.

***Please note pus/discharge can be a source of infection**

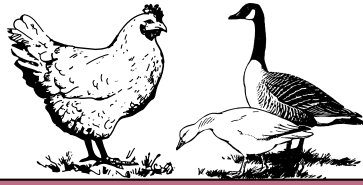
Possible Zoonotic or Infectious Causes: H5N1, E.coli, Salmonella



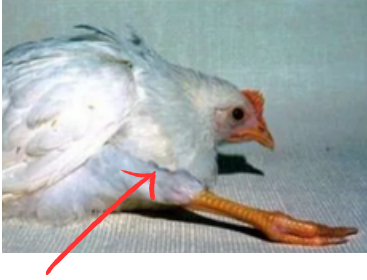
Lameness can have many causes, but it is an animal health and wellness concern. It is recommended that a veterinarian be consulted once a lame animal is identified. Fractured limbs, abscesses (bumbles), strains/sprains, severe arthritis, Merck's disease infection are of concern. DACF recommends sending "down" or event veterinary-determined lame poultry home.

Lameness is an animal welfare concern as well as a contagious/infectious disease concern, given that conditions like Bumble Foot are considered a contagious cause of lameness.

MAINE ANIMAL HEALTH REFERENCE



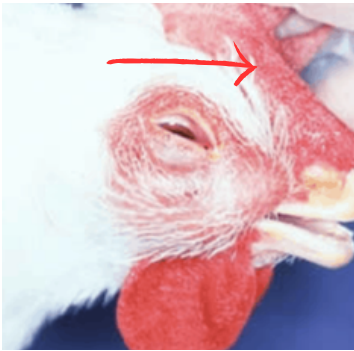
SHALL NOT PASS CHECK-IN FINDINGS



Neurological symptoms are usually easy to spot. Circling, staggering, star gazing, head pressing, strange neck and head posture, inability to eat/drink, head tilt to one side, muscular or facial asymmetry are some common symptoms. Neurological animals should be handled with caution, and a veterinarian should be contacted immediately.

***Please note discharges can be sources of infection.**

Possible Zoonotic or Infectious Causes: Erysipelas, Listeriosis, Botulism, Arboviruses, Influenza



Abscesses are caused by bacteria or other foreign objects entering the body, sometimes after the skin is punctured or from internal means. If the abscess is closed it is less risk. Once it is open, the bacteria can be spread rapidly and can cause disease in other animals and people. Without culturing the abscess, which can take weeks for results, DACF recommends these birds be sent home.

***Please note pus is a source of infection**

Possible Zoonotic or Infectious Causes: Infectious Cryoza, MRSA, E. coli & Other Bacteria



Diarrhea can be a symptom of serious illness. Bloody, green, watery, chronic, or severe diarrhea cases can be fatal. A veterinarian should be consulted if these symptoms are observed in more than two birds in one group of poultry or waterfowl to determine if the cause is stress-related or due to illness. DACF recommends that ill or severely stressed poultry be sent home. A veterinarian must be consulted if the diarrhea is green to rule out serious contagious and infectious diseases such as Newcastle Disease.

***Please note feces can be a source of infection.**

Possible Zoonotic or Infectious Causes: E. coli, Influenza, Coronaviruses, Salmonella, Campylobacter, & Other Bacteria and parasites

Tel: 207-287-3701

Email: AnimalHealth.AGR@maine.gov
